

# Sublimation T-Shirt Heat Press Machine

## Product Manual

---

# Sublimation T-Shirt Heat Press Machine

## Product Manual

### Summarize

This machines is used to thermo-transfer sublimation with colorful pictures and words onto textiles, which are made from cotton, flax, chemical fiber, or nylon etc. This machine also can conduct some heat-treatments, such as hair-planting print, vesicant print, and conglutination of cloth lining and cloth under lower temperature and lower pressure such as the conglutination of kid's clothes and cap and shoes.

### Specification

Voltage: 110V/60HZ

Power: 1800 W

Temperature range: 0~509 F Degree

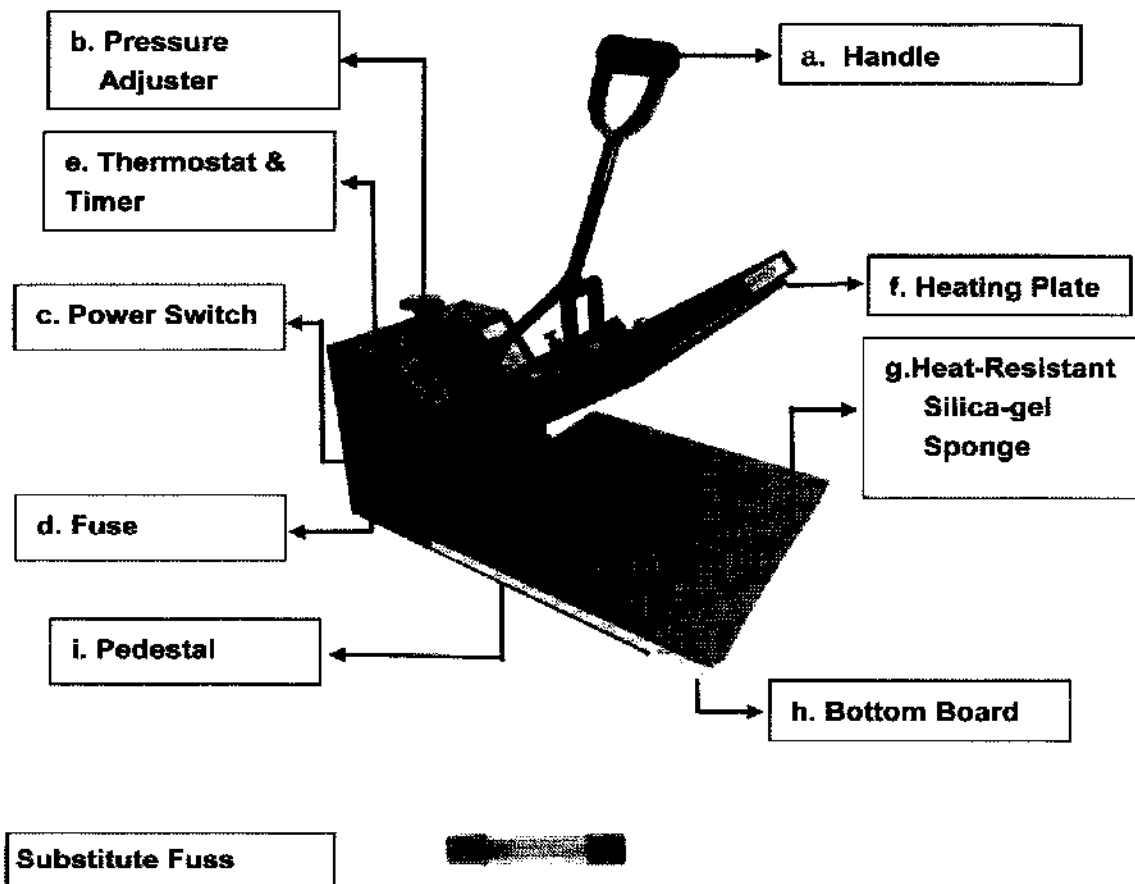
Time control range: 0-999 Sec

Temperature error band: +/-5 Fahrenheit degrees

Working plate size: 15\*15 inch

Gross Weight: 25kg

---



## Product Characteristics

1. Temperature-control Meter & Timer: LCD shows the temperature and time, allowing you to have fully digital temperature and time control.
2. Electronically Control: The processing time is electronically controlled, and the finalization of process steps is warned by light.
3. Teflon Surface: The working surface is covered by Teflon, so it is easy to clean and more durable than cloth coated surface.
4. Pressure Adjuster: You can adjust the pressure to fit your heating requirement.
5. Silica-gel Sponge: Heat-resistant silica-gel sponge is placed on the bottom board, which can endure maximum 400 degree without any distortion. This sponge makes printing on irregular cloth possible.
6. Heating Rapidly: Heating pipeline is connected with heating plate, so the working surface can be heated up in short time.

## Read before Operating:

- Be sure to operate with safe ground wire!!! Check the voltage (110V) before using it.
- When finish your work, please turn off the machine.
- Don't touch the heat plate when the machine is on.
- Keep children away from this machine.

## Time and Temperature Suggestion:

Materials	Time (Sec onds)	Temperature (Fahrenheit Degree)
Pure cotton	25-30s	360~430
Polyester	25s	360~430
Pearl Board	10-15s	300~360
Key Chain	40s	430~450
Mouse pad	25-30s	360~430
PVC Board	40s	360

Note: It is a rough data above, exact data depends on your materials.

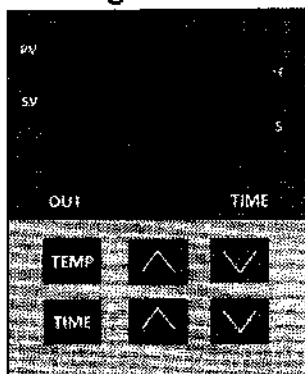
## Operation

### 1.Setting the Pressure



You can use the pressure adjuster to adjust the pressure between the heat plate and bottom board. Turning clock wisely means increasing the pressure. Please raise the handle up and press it down to see whether the pressure is suitable.

### 2.Setting the Time & Temperature



OUT: Heating Indicator Light

TIME: Countdown Time Indicator light

1)Do remember to raise the handle before you put through power supply and turn power switch on.

Otherwise the buzz will ring.

2)Setting the Target Temperature: Press the "TEMP" key, press the V or  $\wedge$  to set the temperature.

You may refer to "Time and temperature suggestion" to determine the suitable temperature and time according to the material.

3)Setting the Target Time: Press the 'TIME' key, press the V or Λ to set the time.

4)Hold the 'Temp' and 'TIME' for 2 second to save the temperature and time setting.

5)Working Temperature: After you save the target temperature and time, the LCD will show the working temperature, which is the current temperature of the heat plate. The heat plate will take some time to warm up. Please wait until the working temperature reaches the target temperature, until then the machine is ready to use.

### 3.Preparing the Sublimation Paper

Print the designed image on the sublimation paper or print the sublimation ink on the color inkjet paper. Remember to choose mirror image. Do not use the sublimation paper until the ink is dry.

### 4.Preparing the blank material (like: cloth)

Prepare the material you want to print the image on. Place it on the silica-gel sponge flatly.

### 5.Begin heat pressing

Place the sublimation paper with the printed side downward facing the blank cloth.

Press the heat plate down to start heating. THE TIMER WILL SART WORKING AUTOMATICLY, namely the heat pressing will begin.

### 6.Finish

When the timer countdowns to zero and the buzzer rings, please raise the handle up to open the heating plate, and then take out the sublimation paper and cloth carefully.

Move the sublimation paper and you will see the designed image is well pressed on the cloth.

### Please Note

1.Be careful of the hot heating attachment

2.Please make sure the heating temperature and transfer time are correct and suitable

3.In order to extend the service life of this machine, please turn off the machine for 15 minutes after it is working for 4 hours

4.You may refer to "**Time and temperature suggestion**" to determine the suitable temperature and time according to the material.

5.Each time you put through power supply and turn power switch on, the heat plate will take some time to warm up to reach the target temperature. Warm-up time is about 30 minutes to 360 F for the first press.

### THE QUESTION PROMPT FOR THE FAILURE PRINTING

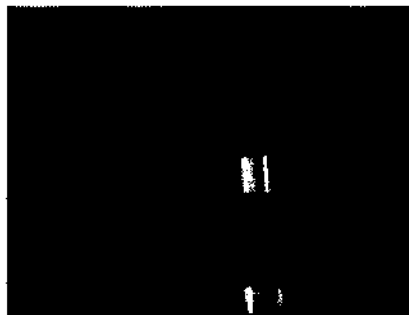
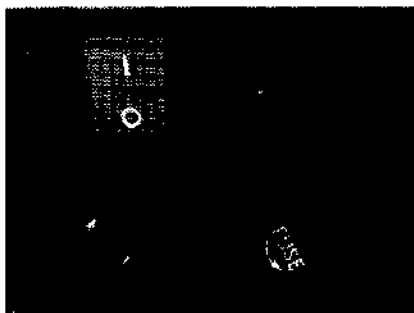
1.The color is lighter: the temperature is too low, or the pressure is not even, or the time is too short.

2.The design is indistinct: the time is too long and lead to ink diffusing.

3. The design has no luster: the pressure is too high or temperature too high.
4. Part of design is indistinct: heat printing zone or the heating is not even.
5. Scar on design: heat printing time is too long.
6. Depth of color is not the same: pressure not even or the coating is not even.
7. Paper stick to the object: the temperature is too high, or the coating of the object is not good.
8. please do not set the temperature more than 480℃, or will shorten the service life of the machine.

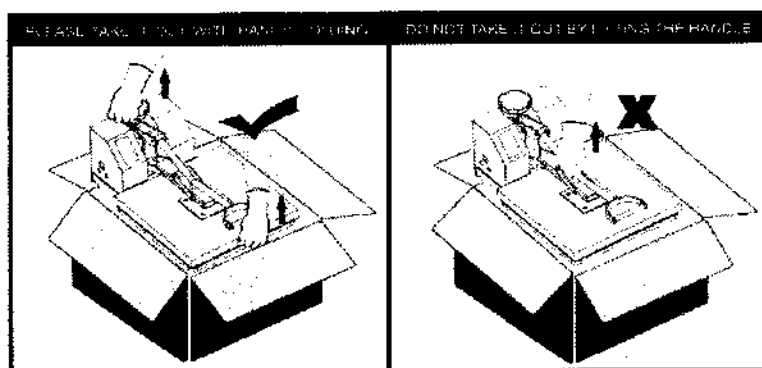
#### HOW TO CHANGE THE SUBSTITUTE FUSS

If the machine is powered off suddenly, it could be the fuss being broken. First, you need to find the substitute fuss from the plastic bag. Then turn to the fuss near the power switch. And take the fuss down and change with the substitute fuss, then install.



#### Notice:

Please take out the machine in the following way.



#### Notice:

Only adjust the pressure when the heating plate is open.

#### Warning:

Do not touch the heating plate when the machine is working.

#### Warning:

Disconnect the plug after finish using the machine.